

Company profile

Qingdao Atom Welding Equipments Co.,Ltd. (China.) is a world leading cold welding technology research, equipment manufacturing company.

Covers an area of 15000 square meters. We have employees more than 200 and 23 senior engineers. Has become a national high-tech enterprises.

We have more than 10 years of experience in this field and keep updating our cold welding technology and improving the performance of the equipments.



The production of **Cold welding machine** and **Intelligent precision welding machine** (thin stainless steel welding machine) has reached the international industry specialization level. As of now we have agents in more than 7 countries.

We focus on customer service and after sales service so much to make our customers feel convenient during the use of our machine.

Product range



1 : Cold welding machine (Model: AWE-16A) is mainly used in foundries for repairing all kinds of casting defects, such as sand hole defects, blow hole defects, pin porosity defects, small shrinkage defects, crack defects etc, suitable for ductile iron, gray iron, aluminum, steel, stainless steel, copper, brass etc. Cold

welding is the best way and the last step to save rejected castings. It can also be used for tungsten surface hardening / old equipments repair / hydraulic parts repair etc.

Similar function model:

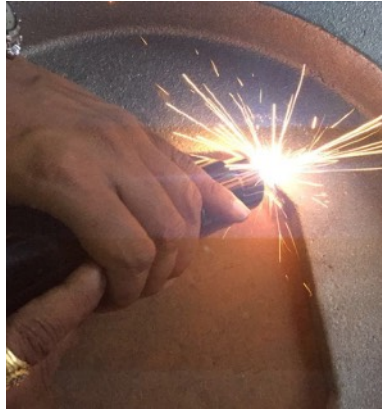


AWE-18S



AWE-19US





Main features:

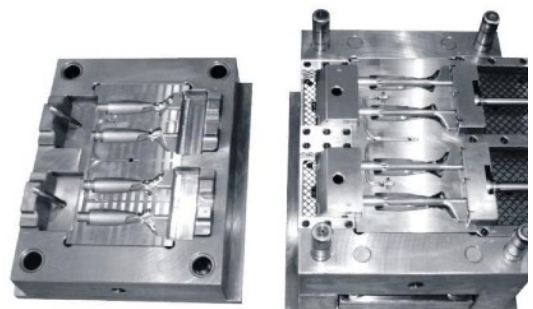
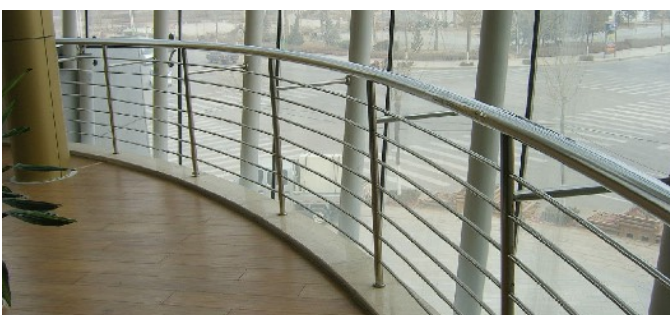
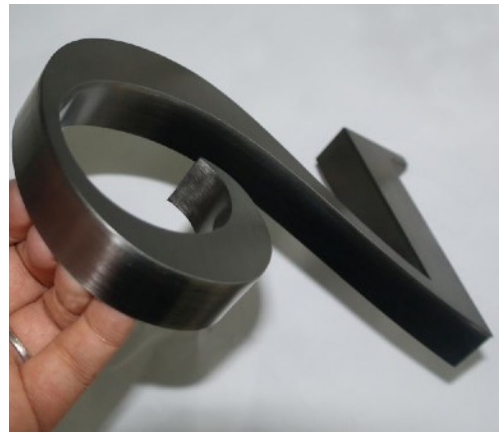
- >> After welding no annealing to the castings;
- >> No need preheat for the castings or electrode;
- >> Very small heat transferred into the castings (the welded surface is room temperature);
- >> Metallurgy combination and can be re-machined;
- >> Will not change the micro structure of the casting;
- >> Help to save cost;



2 : Intelligent precision welding machine

(Model: [AWE-P1600](#)) is mainly used for thin stainless steel welding (minimum welding thickness can be 0.2mm), very clean welding surface, no black edge, no need polish, which is the best machine to replace common argon arc welding machine. Suitable for stainless steel / mild steel / steel / color steel / copper / aluminum / silver / titanium / galvanized sheet

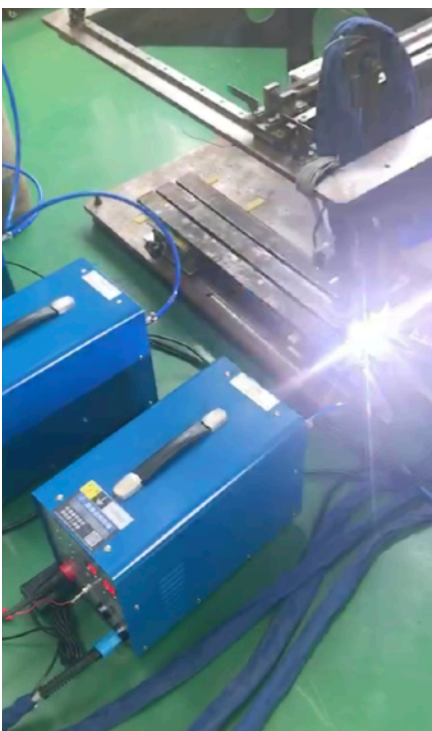
etc. It can also be used for channel letter welding and steel mold repair.



To guarantee our cold welding machine stability, we adopt Japan imported lead-free reflow soldering automatic printing high-speed PCB mounter for PCB SMT processing, and the equipment can even be used for processing mobile phones and other circuit PCB boards.



We strictly control the quality of our products and constantly update the performance of each models.



Before delivery, each machine has been rigorous tested, including stability test, high current durability test, whole machine high-frequency vibration test, to ensure the durability of our welding machine.





We have customers in many countries, Such as China / India / USA / UK / Canada / Turkey / Pakistan / Poland / Singapore / Vietnam / Kenya / Greece / Czech Republic / Thailand / Sarbia / Chile / Thailand / Indonesia / Austria / Slovakia / Sweden / Australia / Israel etc.

Our aim is to provide our customers high quality and high technology equipments with best services to help them save cost and improve production quality.

Waiting for your inquire!

www.atomwelding.com



QINGDAO ATOM WELDING EQUIPMENTS CO.,LTD.

No.16 Liaoyang east road, Qingdao, China.
www.atomwelding.com | www.welding-machine.cn
Phone: 0086-18661811965
info@atomwelding.com